

Differential Sensitivity Between a Virtual Reality Balance Module and Clinically Used Concussion Balance Modalities

Elizabeth F. Teel, MS,*†‡ Michael R. Gay, PhD,*† Peter A. Arnett, PhD,§
and Semyon M. Slobounov, PhD*†

Objective: Balance assessments are part of the recommended clinical concussion evaluation, along with computerized neuropsychological testing and self-reported symptoms checklists. New technology has allowed for the creation of virtual reality (VR) balance assessments to be used in concussion care, but there is little information on the sensitivity and specificity of these evaluations. The purpose of this study is to establish the sensitivity and specificity of a VR balance module for detecting lingering balance deficits clinical concussion care.

Design: Retrospective case-control study.

Setting: Institutional research laboratory.

Participants: Normal controls (n = 94) and concussed participants (n = 27).

Interventions: All participants completed a VR balance assessment paradigm. Concussed participants were diagnosed by a Certified Athletic Trainer or physician (with 48 hours postinjury) and tested in the laboratory between 7 and 10 days postinjury. Receiver operating characteristic curves were performed to establish the VR module's sensitivity and specificity for detecting lingering balance deficits.

Main Outcome Measures: Final balance score.

Results: For the VR balance module, a cutoff score of 8.25 was established to maximize sensitivity at 85.7% and specificity at 87.8%.

Conclusions: The VR balance module has high sensitivity and specificity for detecting subacute balance deficits after concussive injury.

Clinical Relevance: The VR balance has a high subacute sensitivity and specificity as a stand-alone balance assessment tool and may detect ongoing balance deficits not readily detectable by the

Balance Error Scoring System or Sensory Organization Test. Virtual reality balance modules may be a beneficial addition to the current clinical concussion diagnostic battery.

Key Words: virtual reality, postural balance, brain concussion, sensitivity and specificity, trauma, injury

(*Clin J Sport Med* 2016;26:162–166)

INTRODUCTION

Currently, the clinical “gold standard” in the evaluation of patients recovering from concussive injury is the clinical evaluation, which is supported by a battery of tests, including computerized neuropsychological evaluations, clinical balance assessments, and patient reported symptom checklists.^{1,2} The Balance Error Scoring System (BESS) is a widely used clinical postural control test that evaluates an athlete's ability to maintain balance with eyes closed and hands on hips in a 2-footed, 1-footed, and tandem position on solid and foam surfaces.³ More dynamic than the BESS, the Sensory Organization Test (SOT) is a commonly used tool that consists of 6 conditions, which provides insight into an athlete's ability to process and integrate sensory and visual information.⁴

Continuing improvements in technology and affordability has opened up the door to incorporating virtual reality (VR) testing into clinical concussion care. Compared with more traditional tests, the benefits of the VR environment includes the 3-dimensional (3D) nature of the tests, the ability to assess depth perception, increases in the subject's sense of presence within the virtual environment, and the transferability to real-life situations.⁵ Several clinical studies have found that VR assessments are sensitive to concussive deficits,^{5–7} risk of falling in the elderly subjects,⁸ and balance deficits in stroke and/or cerebral palsy patients.^{9,10}

Balance deficits have been found after concussion, with deficits typically resolving 3 to 5 days postinjury.^{11,12} It has been hypothesized that balance dysfunction after concussion is due to the brain having difficulties integrating vestibular, visual, and somatosensory information.¹³ Virtual reality technology has been well documented to induce egomotion, or actual motion in response to optic flow, andvection, or illusionary thoughts of self-motion due to the moving environment. As vision is a critical component of postural control, VR paradigms that use egomotion andvection may be able to provoke and identify balance deficits after concussion.

Although the benefits of VR environments are fairly universal, there are a large number of VR-based platforms.

Submitted for publication May 19, 2014; accepted January 25, 2015.

From the *Department of Kinesiology, Penn State University, University Park, Pennsylvania; †Penn State Center for Sport Concussion Research and Services, University Park, Pennsylvania; ‡Human Movement Science Curriculum, University of North Carolina at Chapel Hill, Chapel Hill, North Carolina; and §Department of Psychology, Penn State University, University Park, Pennsylvania.

Supported by the National Institute of Health Grant No. 2R01 NS056227-06, “The effects of mild traumatic brain injury on neuropsychological test scores, postural stability, and general brain function.”

The authors report no conflicts of interest.

Corresponding Author: Elizabeth F. Teel, MS, 209 Fetzer Hall, CB #8700, Chapel Hill, NC 27599 (eteel@live.unc.edu).

Copyright © 2015 Wolters Kluwer Health, Inc. All rights reserved.

The VR platform used in this study is designed to imitate a health care provider's office to create a plausible environment for the participant to be completing postinjury testing. Although this VR technology has been around for several years and offers several benefits, the inconsistency between the various platforms is currently a limitation.

For VR technology to become part of clinical concussion assessment and management, VR paradigms must be shown to adequately distinguish concussed patients from healthy controls. Therefore, the primary purpose of this study is to examine the specificity and sensitivity of a VR-based balance assessment (VR balance module) to detect subacute balance deficits.

METHODS

Data were retrospectively gathered on 94 normal controls and 27 concussed participants. Within 48 hours, a certified athletic trainer and team physician diagnosed concussions based on the results of a clinical evaluation, symptom checklist, neuropsychological testing, and clinical balance assessment. Concussed participants were tested on the VR balance module between 7 and 10 days postinjury. All participants, regardless of group, were excluded if there were any known neurologic disorder, lower extremity injury affecting balance, or attention deficit disorder/attention deficit hyperactivity disorder. This study followed the ethical guidelines put in place by the Pennsylvania State University, whose Institutional Review Board approved this protocol before testing. All participants signed an informed consent form before testing began.

A VisMini by Vizbox Ultra Portable Passive Stereo (Saint Joseph, Illinois) 3D projection system, which makes use of Infitec stereo (Mainz, Germany), allowed flicker-free stereo. InterSense's (Billerica, Massachusetts) patented inertial-ultrasonic hybrid tracking technology (IS-900 PCT tracker system) offered real-time tracking of position and orientation in Yaw, Pitch, and Roll directions. The sensor was located on the subject's head to interact with the visual field motion induced by VR moving room paradigm (Slobounov et al, 2011). A 83" × 144" projection screen was used to display the VR animations. The software was developed and provided by HeadRehab, LLC (Chicago, Illinois).

Before testing began, each participant was given liquid crystal shutter glasses to separate the field sequential stereo images into right and left eye images and secured in a harness to prevent injury in case of loss of balance. Each participant stood in the Romberg position (1 foot directly in front of the other, hands on hips) and was asked to remain as still as possible as the virtual room he/she was viewing swayed in one of 3 directions for 30 seconds (Figure 1).

During the first trial, the virtual room remained completely still. During the subsequent 9 trials, the room rotated exclusively in one of the 3 planes: yaw (rotation about the vertical (z) axis between 10 and 30 degrees at 0.2 Hz), pitch (rotation about the interaural (x) axis between 10 and 30 degrees at 0.2 Hz), or roll (rotation about the y axis between 10 and 30 degrees at 0.2 Hz). The final balance score, a composite score generated from the combination of

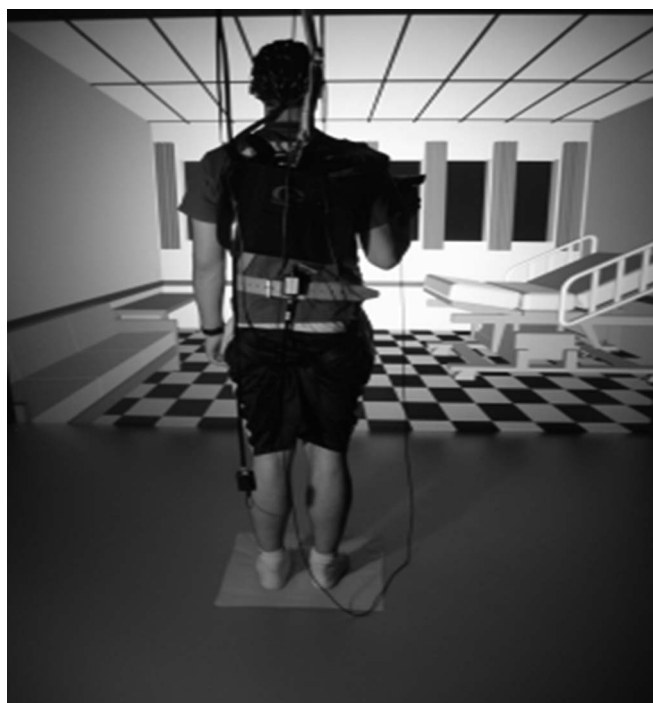


FIGURE 1. Example of the VR set-up used during data collection. Participant is harnessed and viewing the VR environment (health care office) during the stationary balance condition.

all 10 balance trials, was used as an outcome measure in this study. The final balance score is automatically generated by the VR software used in this study and is determined by the amount of head deviation (in square centimeters) of each participant during each trial. Each of the 10 trials contributes equally to the final balance score, which is an averaged score that ranges from 0 (worst) to 10 (best).

All outcome measures were analyzed using IBM SPSS version 19.0 (Armonk, New York). A receiver operating characteristic (ROC) curve was run for the final balance score to determine which cutoff point maximized the sensitivity and specificity of the VR balance module. A priori alpha level was set at 0.05.

RESULTS

Participants from both groups were all college aged (18–24 years), Division I varsity athletes participating in football, ice hockey, or soccer (football) or club rugby. The control group (nonconcussed athletes at the time of testing) completed the VR balance module 1 time during their athletic career. All of the athletes in the concussed group were tested 7 to 10 days after their concussion and were cleared to begin the return-to-play protocol by their team physician at the time of testing. To begin the return-to-play protocol, all concussed athletes must have been asymptomatic and passed clinical neuropsychological and balance testing before completing the VR balance module.

Because of the non-normal distribution (positively skewed), data were transformed using the natural log for

TABLE. Cutoff Scores and the Given Sensitivity and Specificity for the VR Balance Module

Cutoff Score	Sensitivity	Specificity
9.25	96.3	11.6
9.00	88.9	33.7
8.75	85.7	62.1
8.50	85.7	78.9
8.25	85.7	87.8
8.00	74.1	90.5
7.75	37.0	94.7
7.50	25.9	98.9
7.25	14.8	98.9

the statistical analysis. Independent samples *t* test were run between the 2 groups. After statistical analysis, data were retransformed in their original metric and are presented in this metric throughout. There were no differences between the control and concussed group ($P = 0.067$; control: mean = 8.58, 95% confidence interval (CI): 8.17-8.99; concussed: mean = 7.87, 95% CI: 7.62-8.13).

For the VR balance module, a cutoff score of 8.25 was determined to maximize sensitivity and specificity. At this score, the VR balance module was found to have a sensitivity of 85.7% and a specificity of 87.8%. The area under the curve (AUC) was 0.862 (95% CI: 0.767-0.958). A table detailing sensitivity and specificity at different cutoff scores (Table), as well as the ROC curve for the data (Figure 2), is shown below.

The positive predictive value of the VR balance module was 65.7%, whereas the negative predictive value was 97.7%. The likelihood ratio was given as 18.28 and odds ratio was listed at 0.24 (95% CI: 0.11-0.52).

DISCUSSION

The primary purpose of this study was to determine the sensitivity and specificity of a VR balance module in detecting lingering balance deficits to determine whether the paradigm meets the current standard for use in clinical care. This was achieved by having concussed and control participants complete a VR balance module designed for use in concussion assessment and management. An ROC curve was run to establish cutoff scores and determine the sensitivity and specificity of the VR balance module. For the VR balance module, the AUC was found to be 0.862 (95% CI: 0.767-0.958), where a perfect diagnostic test would have an AUC of 1.¹⁴ A cutoff score of 8.25 was determined to maximize the combined sensitivity and specificity of the VR balance module to detecting subacute balance deficits (85.7% sensitivity and 87.8% specificity).

The BESS and the SOT are 2 commonly used postural assessment tools in concussion assessment and management. In a study by Furman et al,¹⁵ the overall BESS score was found to have an AUC of 0.74 (95% CI: 0.53-0.94) when differentiating between healthy participants and concussed individuals tested approximately 8 days postinjury. Furman et al established a cutoff score of 21 for the BESS, maximizing the sensitivity at 60% and specificity at 82%. Receiver operating characteristic curves were run for each of individual BESS conditions as well, with the most sensitive conditions being the tandem stance on a foam surface (AUC, 0.80; 95% CI: 0.66-0.95; $P < 0.01$). Although this study shows that the BESS is capable of detecting concussive deficits 8 days postinjury, other studies indicate that BESS scores return to baseline 3 to 5 days after concussive injury.^{11,12} Although, to our knowledge, no other studies completed ROC curves on the BESS, other studies have evaluated the BESS for sensitivity and specificity. A 2005 study by McCrea et al¹⁶ found that

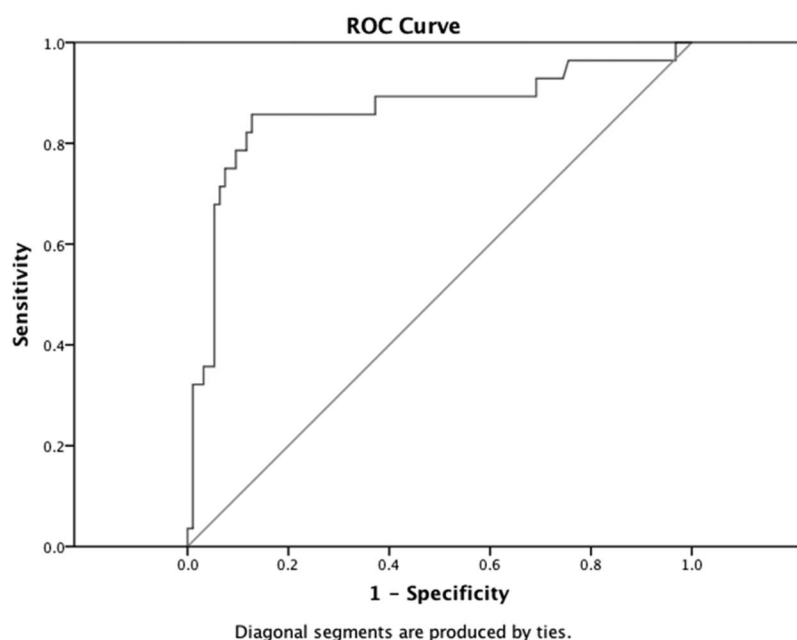


FIGURE 2. ROC curve established for the VR balance module. The blue line represents the trade off between sensitivity and specificity at given cutoff values. The further the blue line is to the left and above the green line (45-degree diagonal through the ROC space), the better the diagnostic value of the test.

sensitivity and specificity of the BESS was maximized at the time of injury (34% and 91%, respectively).

Two studies by Broglio et al^{17,18} have examined the sensitivity and specificity of the SOT. In a study of 129 participants (63 concussed, tested within 24 hours of injury) using reliable change (RC) scores, the SOT was found to maximize a combined sensitivity and specificity at an RC of 1.38 at the 75% CI.¹⁷ At this cutoff, overall sensitivity was 57% and specificity was 80%. An earlier study by Broglio et al,¹⁸ using the same population as the aforementioned study, looked at the overall sensitivity of the SOT. However, instead of using RC scores, Broglio et al used changes of more than 1 SD from baseline scores as a clinically meaningful finding. When using these criteria, the SOT had a sensitivity of 61.9%.

Compared with the BESS and the SOT, the VR balance paradigm has better overall sensitivity and specificity. Particularly, when looking at the sensitivity of the overall balance assessment instead of individual components, the VR paradigm was capable of discriminating 85.7% of concussed participants compared with 60% in BESS and 61.9% of SOT. Although the VR balance paradigm does not represent a perfect clinical tool, it exceeds the current standard of sensitivity and specificity set by the BESS and SOT. This is not to suggest that the BESS and SOT are poor tools or should be replaced in clinical care. Instead, the authors are suggesting that the VR balance module may be more sensitive to ongoing balance deficits and that the VR paradigm meets the sensitive and specificity standards needed to be implemented in clinical care.

Along with sensitivity and specificity, it is important to consider other psychometric properties of diagnostic tools before they can be included in the clinical concussion battery. The VR balance module used in this study has previously been shown as a valid postural stability assessment tool.¹⁹ In 2 studies using D-1 college football players, it was shown that there are no differences between VR final balance scores over 3 separate testing sessions as well as scores before and after a full practice.²⁰ More formal reliability statistics, such as intraclass correlation coefficients, have yet to be established for this technology. This current lack of more formal reliability statistics makes it difficult to compare the serial nature of VR balance testing to other modalities such as the BESS and SOT.

When making comparisons between the VR battery and other testing paradigms, it is important to highlight the timelines after injury used in these studies. Concussion symptoms and deficits change fairly rapidly after injury, so it is important to consider how the amount of time after injury may affect outcome variables. The participants completing the VR testing battery were tested between 7 and 10 days postinjury. The only other study using a similar timeline was the Furman et al¹⁵ study, which tested participants approximately 8 days postinjury. For all other studies included in this discussion, participants were tested within 72 hours postinjury. Most studies show that balance deficits resolve between 3 and 5 days postinjury^{11,12} and neuropsychological deficits resolve within 7 days postinjury.^{21,22} Therefore, the fact that VR technology showed similar or better levels of sensitivity and specificity than other tools at 7 to 10 days postconcussive

injury may indicate that VR paradigms are capable of detecting residual deficits of concussion missed by other clinical tools. Therefore, when returning athletes to play, clinicians should be aware that athletes might be continuing to experience lingering balance deficits not readily detectable by common clinical tools.

Although this study indicates that VR programs have the potential to be useful clinical tools in concussion diagnosis, VR paradigms do not come without their limitations. The hardware and software needed to run a VR system is costly. With the creation of 3D televisions, the cost has been greatly reduced from previous systems. However, the initial cost of setting up a VR environment will be a considerable investment. Another limitation of VR environments is their mobility. Generally, VR systems are stationary and take a great deal of effort and expertise to relocate. Portable display screens and 3D head mounting display systems significantly increase the ease of movement and can even allow for sideline evaluations, but these devices are again costly. Finally, VR systems are very technically advanced. Typically, they require a great deal of expertise for installation, which may require outsourcing for initial setup. Although these are serious limitations to using VR systems, the potential benefits, in terms of diagnosis and rehabilitation, should not be ignored.

CONCLUSIONS

There is no perfect clinical tool for concussion assessment and management and VR testing is no exception to that. Current tools, such as the BESS and SOT, represent solid assessment modules that have clinically stood the test of time. However, researchers need to continue to push for better tools to protect concussed individuals from long-term damage due to misdiagnosis or returning to play too early. Advancing technology has opened the door for VR technology to become part of clinical concussion injury testing. Although future research will be needed to continuously evaluate the appropriateness of VR technology in clinical settings, this study provides support for the implementation of a VR balance module into clinical concussion care. The high sensitivity and specificity of the VR balance module, which exceeds the minimum standards set by current clinical tools, indicate the appropriateness of VR as a testing tool and may provide a new and improved way to assess individuals after a suspected concussive injury.

ACKNOWLEDGMENTS

The authors thank Katie Finelli for her assistance in data collection.

REFERENCES

1. Broglio SP, Sosnoff JJ, Ferrara MS. The relationship of athlete-reported concussion symptoms and objective measures of neurocognitive function and postural control. *Clin J Sport Med.* 2009;19:377–382.
2. Piland SG, Motl RW, Guskiewicz KM, et al. Structural validity of a self-report concussion-related symptom scale. *Med Sci Sports Exerc.* 2006;38:27–32.
3. Oliaro S, Anderson S, Hooker D. Management of cerebral concussion in sports: the athletic trainer's perspective. *J Athl Train.* 2001;36:257–262.

4. Dickin DC. Obtaining reliable performance measures on the sensory organization test: altered testing sequences in young adults. *Clin J Sport Med*. 2010;20:278–285.
5. Slobounov S, Sebastianelli W, Newell KM. Incorporating virtual reality graphics with brain imaging for assessment of sport-related concussions. *Conf Proc IEEE Eng Med Biol Soc*. 2011;6:6090325.
6. Slobounov S, Slobounov E, Newell K. Application of virtual reality graphics in assessment of concussion. *Cyberpsychol Behav*. 2006;9:188–191.
7. Slobounov S, Tutwiler R, Sebastianelli W, et al. Alteration of postural responses to visual field motion in mild traumatic brain injury. *Neurosurgery*. 2006;59:134–139.
8. Haibach PS, Slobounov SM, Newell KM. The potential applications of a virtual moving environment for assessing falls in elderly adults. *Gait Posture*. 2008;27:303–308.
9. Slaboda JC, Keshner EA. Reorientation to vertical modulated by combined support surface tilt and virtual visual flow in healthy elders and adults with stroke. *J Neurol*. 2012;259:2664–2672.
10. Slaboda JC, Lauer RT, Keshner EA. Postural responses of adults with cerebral palsy to combined base of support and visual field rotation. *IEEE Trans Neural Syst Rehabil Eng*. 2013;21:218–224.
11. McCrea M, Guskiewicz KM, Marshall SW, et al. Acute effects and recovery time following concussion in collegiate football players: the NCAA Concussion Study. *JAMA*. 2003;290:2556–2563.
12. Riemann BL, Guskiewicz KM, Shields EW. Relationship between clinical and forceplate measures of postural stability. *J Sports Rehabil*. 1999;8:71–82.
13. Guskiewicz KM. Postural stability assessment following concussion: one piece of the puzzle. *Clin J Sport Med*. 2001;11:182–189.
14. Park SH, Goo JM, Jo CH. Receiver operating characteristic (ROC) curve: practical review for radiologists. *Korean J Radiol*. 2004;5:11–18.
15. Furman GR, Lin CC, Bellanca JL, et al. Comparison of the balance accelerometer measure and balance error scoring system in adolescent concussions in sports. *Am J Sports Med*. 2013;41:1404–1410.
16. McCrea M, Barr WB, Guskiewicz K, et al. Standard regression-based methods for measuring recovery after sport-related concussion. *J Int Neuropsychol Soc*. 2005;11:58–69.
17. Broglio SP, Ferrara MS, Sapienza K, et al. Reliable change of the sensory organization test. *Clin J Sport Med*. 2008;18:148–154.
18. Broglio SP, Macciocchi SN, Ferrara MS. Sensitivity of the concussion assessment battery. *Neurosurgery*. 2007;60:1050–1057.
19. Teel EF, Slobounov SM. Validation of a virtual reality balance module for use in clinical concussion assessment and management. *Clin J Sport Med*. 2015;25:144–148.
20. Slobounov S, Sebastianelli W. *Concussion in Athletics: From Brain to Behavior*. New York, NY: Springer Science + Business Media; 2014.
21. Iverson GL, Brooks BL, Collins MW, et al. Tracking neuropsychological recovery following concussion in sport. *Brain Inj*. 2006;20:245–252.
22. Macciocchi SN, Barth JT, Alves W, et al. Neuropsychological functioning and recovery after mild head injury in collegiate athletes. *Neurosurgery*. 1996;39:510–514.